



AX3000 Wi-Fi 6 Range Extender

with AC Passthrough

Boost your Wi-Fi Coverage



RE765X

 Eliminate Wi-Fi
Dead Zones

 Connect
More Devices^Δ

 Uninterrupted
Streaming[§]

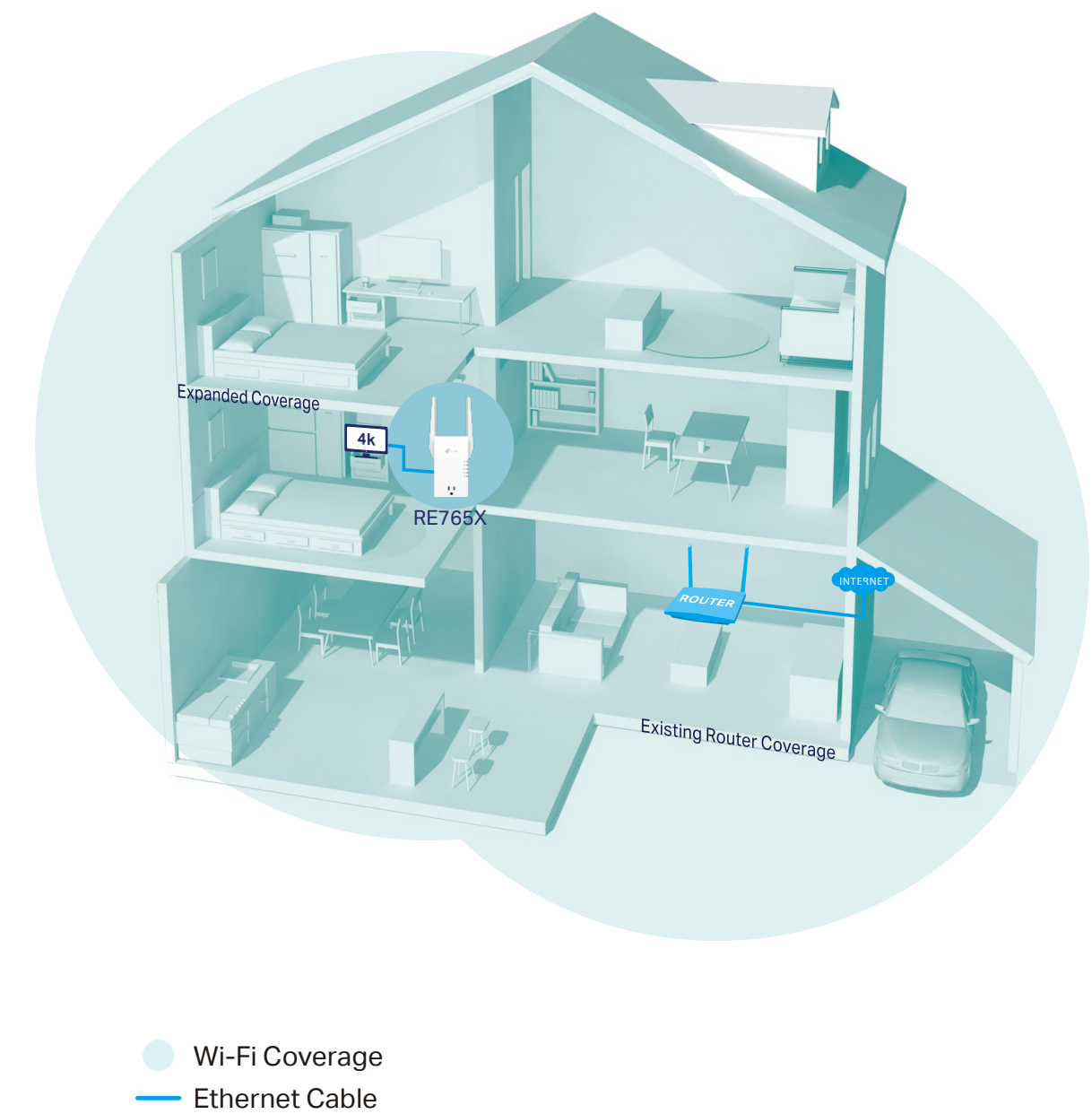
 Easy Setup
Within Minutes

 Smart Plug
Integrated

Highlights

Extend AX3000 Wi-Fi to Your Whole Home

Works with any Wi-Fi router to eliminate Wi-Fi dead zones, and blanket your home with stable, super-fast, seamless Wi-Fi via EasyMesh.



Faster Wi-Fi 6 Speed

Experience explosive Wi-Fi speeds up to 3 Gbps with the wider 160 MHz channel.[†]



Larger Capacity

Wi-Fi 6 builds a more efficient network that increases the average throughput by 4 times and serves more devices.[^]



Ultra-Low Latency

Take advantage of ultra-low latency to enjoy a smoother online experience.



Access Point Mode

Create a new Wi-Fi access point to enhance your wired network with Wi-Fi capability.



Easy Setup Within Minutes

Easy setup and management via the WPS button/Tether app/Web UI.



Smart Plug Integrated

Energy Monitoring

Tracks the energy use of connected devices and allows electricity rate input for bill estimates.

Schedule

Preset a schedule to automatically manage devices.

Remote Control

Instantly turn connected devices on/off from wherever you are through the Tether app.

Auto-Off

Automatically turns off a connected device after the device is left on for a set time.

Highlights



EasyMesh-Compatible

Connect with an EasyMesh-compatible router to create a mesh network for seamless whole-home coverage, or any Wi-Fi router to boost your Wi-Fi range. †**



Wi-Fi Dead-Zone Killer

Eliminate weak signal areas with Wi-Fi coverage for the whole house.



Uninterrupted Streaming^s

Enjoy uninterrupted streaming, surfing, and more—even when moving around your home.



One Wi-Fi Name

Stay connected to the same network name in every room.



Unified Management

Push the WPS button to set up a Mesh network you can manage from the Tether app or web UI.



Check the full list of TP-Link's EasyMesh-compatible extenders and routers at tp-link.com/easymesh/product-list/

*More compatible devices coming soon

Wi-Fi 6 Range Extender



Secure One-touch Connection (WPS)

Instantly connect the extender to a router without any additional configuration.

Smart Signal Indicator

See signal to find the best spot to extend Wi-Fi.

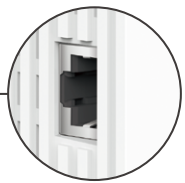
- Strong signal
- Weak signal

Smart Plug Integrated

Enables energy monitoring and remote control of connected devices.

Gigabit Ethernet Port

Plug in to give wired device network access, particularly ideal for high bandwidth consuming devices.



PC

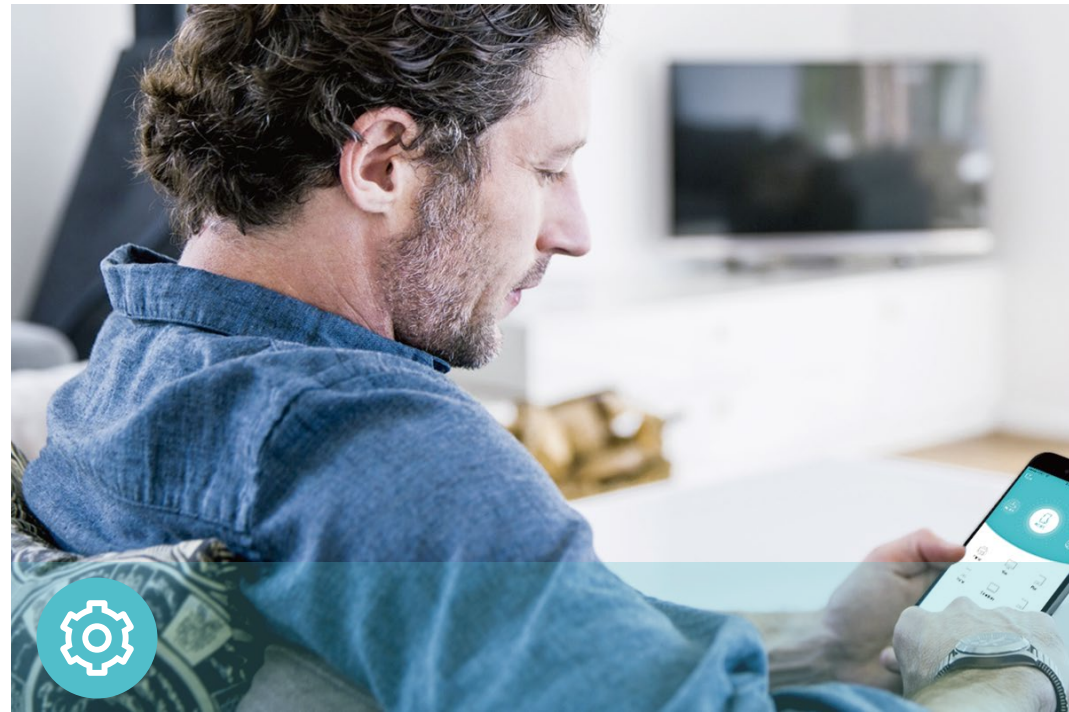


Game Console



Smart TV

Features



Ease of Use

- **Intuitive Web UI**– Ensures quick and simple installation without hassle
- **Fast Encryption** – One-touch wireless security encryption with the WPS button
- **Hassle-free Management with Tether App** – Network management is made easy with the TP-Link Tether App, available on any Android or iOS device
- **Online Upgrade** – Keeps you informed of the latest firmware and allows online updating on the web UI



Speed

- **Ultimate Wireless Speed** – Combined wireless speeds of up to 574 Mbps (over 2.4 GHz) and 2402 Mbps (over 5 GHz)[†]
- **Support Wi-Fi 6** – Turbocharge your devices with wireless speeds of up to 3 Gbps
- **Adaptive Path Selection** – Keep your network running at top-speed by automatically choosing the fastest connection path to the router



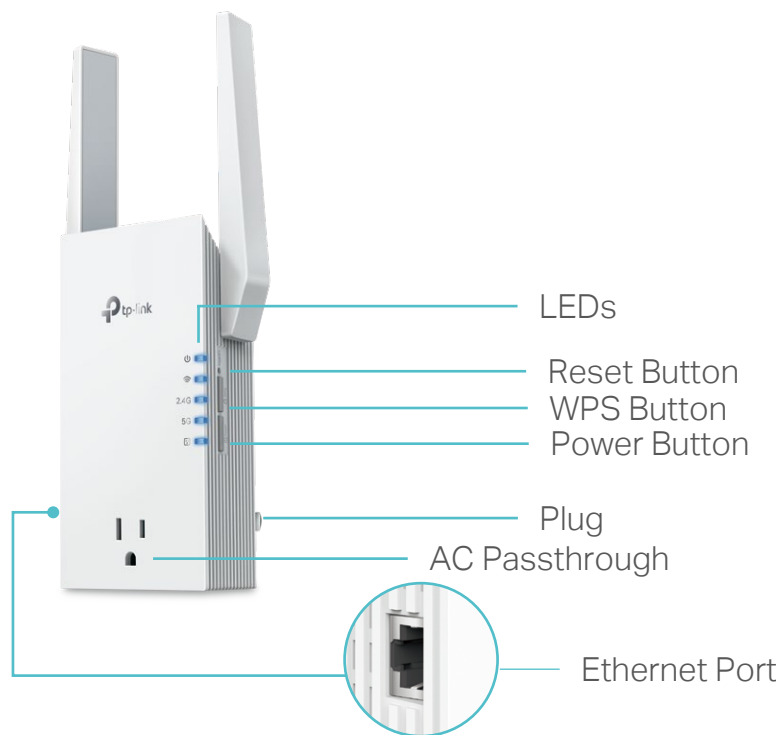
Reliability

- **Simultaneous Dual Band** – Separate Wi-Fi bands enable more devices to connect to your network without a drop in performance
- **Reliable Connection** – External antennas for optimal Wi-Fi coverage and reliable wireless connections
- **Ultra-Low Latency** – Take advantage of ultra-low latency to enjoy smoother online experience

Specifications

Hardware

- Button: WPS Button, Reset Button, Power Button
- Port: 1 Gigabit Ethernet Port
- Antenna: 2 External Antennas
- Power Supply: 125V~60Hz 15A
- Max Load: 15A (General Use / Resistive Load),
8A Incandescent, 1/6 HP Motor
- Power Consumption: 13.5W
- Dimensions (W × D × H): 2.9×1.8×4.9 in. (74.0×46×124.8 mm)



For more information, please visit
https://www.tp-link.com/products/details/?model=RE765X_V1.6
or scan the QR code left

©2025 TP-Link

¹Maximum wireless signal rates are the physical rates derived from IEEE Standard 802.11 specifications. Actual wireless data throughput and wireless coverage per ft² are not guaranteed and will vary as a result of network conditions, client limitations, and environmental factors, including building materials, obstacles, volume and density of traffic, and client location.

²The product may not be compatible with routers or gateways with firmware that has been altered, is based on open source programs, or is non-standard or outdated.

³Uninterrupted Streaming is designed for devices that support the 802.11k/v standard.

⁴Up to 4x Capacity refers to 4x increase in median throughput under dense environment compared to 11ac wave 2 range extender.

⁵Saving clients' battery power requires clients to also support the 802.11ax Wi-Fi standard. Actual power reduction may vary as a result of network conditions, client limitations, and environmental factors.

⁶TP-Link EasyMesh-compatible products can network with other devices that use EasyMesh. Failed connections may be due to firmware conflicts of different vendors. The EasyMesh-Compatible function is still being developed on some models and will be supported in subsequent software updates. This product is compatible with standardized EasyMesh technology but has not obtained the Wi-Fi EasyMesh™ certification.

⁷The total power of the connected electrical equipment should not exceed the max load current, and maximum power supported varies based on the appliance.

Wireless

- Wireless Standards: IEEE 802.11a/n/ac/ax 5 GHz, IEEE 802.11b/g/n/ax 2.4 GHz
- Frequency: 2.4 GHz and 5 GHz
- Signal Rate: 574 Mbps at 2.4 GHz, 2402 Mbps at 5 GHz
- Transmit Power: FCC: 2.4 GHz ≤ 30dBm, 5 GHz ≤ 30dBm
- Reception Sensitivity:
5 GHz:
11ax HE80 MCS0: -88dBm, 11ax HE80 MCS11: -58dBm
11a 6Mbps: -94dBm, 11a 54Mbps: -76dBm
11ac VHT80 MCS0: -91dBm, 11ac VHT80 MCS9: -63dBm
11ax HE160 MCS11: -57dBm, 11ax HE160 MCS0: -88dBm
11ax HE40 MCS11: -63dbm, 11ax HE40 MCS0: -93dbm
2.4 GHz:
11ax HE40 MCS0:-93 dBm, 11ax HE40 MCS11:-63 dBm
11g 6Mbps:-95 dBm, 11g 54Mbps:-77 dBm
11n HT40 MCS9:-72dBm
- Wireless Function: Access Control, Power Schedule, Wi-Fi Coverage
- Wireless Security: WPA/WPA2-PSK, WPA3 encryptions

Others

- Certification
FCC, RoHS
- System Requirements
Microsoft Windows 98SE, NT, 2000, XP, Vista™ or Windows 7, 8, 8.1, 10, MAC OS, NetWare, UNIX or Linux
Internet Explorer 11, Firefox 12.0, Chrome 20.0, Safari 4.0, or other Java-enabled browser
- Package Contents
Wi-Fi Range Extender RE765X
Quick Installation Guide

Software

- Mode: Repeater, Access Point
- LED Control: On/Off, Night Mode
- Access Control: Allow list, Deny list
- Smart Plug: Energy Usage, Schedule, Timer, Away mode